

# MHT-X 1490

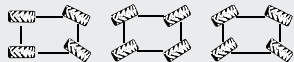
TECHNICAL DATA SHEET

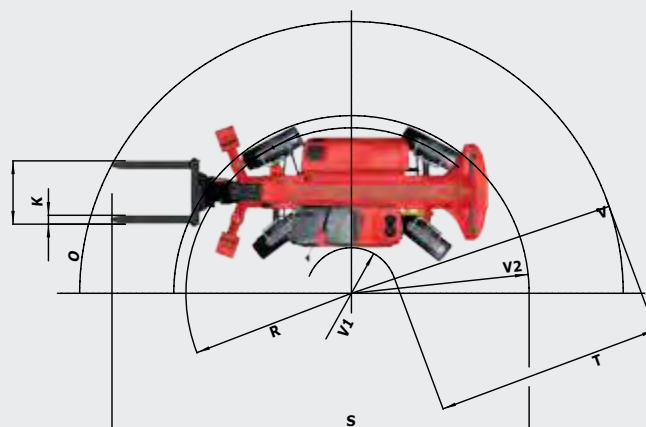
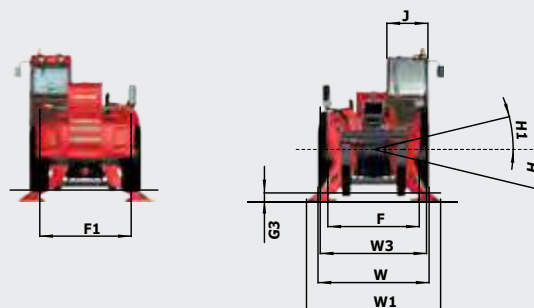
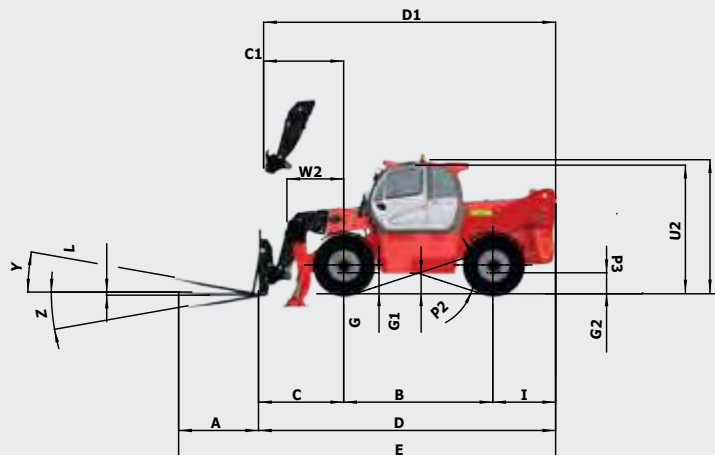


 **MANITOU**

[www.manitou.com](http://www.manitou.com)

# MHT-X 1490

MHT-X 1490		
	on tyres	on stabilizers
<b>Lifting</b>		
Max. capacity with forks at 600 mm	9 000 kg	
Max. lifting height	13.67 m	14.00 m
Max. Outreach	9.50 m	9.41 m
<b>Tyres</b>	17.5 R 25	
<b>Frame levelling</b>	+/- 10°	
<b>Braking</b>		
Service brake	Oil bath multiple-disc brakes hydraulically assisted on both axles	
Parking brake	Automatic Negative Parking brake	
<b>Engine</b>		
	MERCEDES	
Type	OM 934 LA. E3A/1 (Stage III / Tier III)	
Displacement	4 cylinders 4.25 liters	
Power	176 HP / 129 kW	
Max. torque	675 Nm / 1200-1600 rpm	
Batteries	24 V - 2X12 V - 120 Ah - 850 A	
Laden drawbar pull	10 800 daN	
Gradability	34%	
<b>Transmission</b>		
	Hydrostatic	
Reversing shift	Electrohydraulic control	
Number of gears (forward /reverse)	2/2	
Steering mode	4 wheel steer - 3 steering Modes	
		
Max. travel speed (may vary according to applicable regulations)	31 kph	
Axles		
<b>Controls</b>		
	JSM® Joystick multi-fonction Load limiter cut off system - EN 15000 Norm	
<b>Hydraulics</b>		
Load sensing pump	180 l/min - 300 bar	
<b>Capacities</b>		
Hydraulic oil	290 l	
Fuel	315 l	
<b>Unladen weight (with forks)</b>	20 800 kg	
<b>Dimensions</b>		
Overall width	2.51 m	
Overall height	3.00 m	
Overall length to carriage	6.65 m	
Ground clearance	0.44 m	
Turning radius (over tyres)	5.34 m	
Standard forks (length x width x thickness)	1200 x 200 x 60 mm	
<b>Noise and vibration</b>		
Noise at driving position (LpA)	82 dB	
Environmental noise(LWA)	106 dB	
Vibration to whole hand	<2.5 m/s <sup>2</sup>	



mm	MHT-X 1490
A	1200
B	3370
C	1865
C1	1795
D	6655
D1	6585
E	7855
F	2065
G	440
G1	440
G2	440
G3	290
H	10°
H1	10°
I	1415
J	930
K	1425

mm	MHT-X 1490
L	60
O	200
P2	18°
P3	36°
R	5113
S	10050
T	3905
U2	3000
V	6455
V1	2550
V2	5345
W	2510
W1	3030
W2	1280
Y	18°
Z	117°

This brochure describes versions and configuration options for MANITOU products which may be fitted with different equipment. The equipment described in this brochure may be standard, optional or not available depending on version. MANITOU reserves the right to change the specifications shown and described at any time and without prior warning. The manufacturer is not liable for the specifications given. For more information, contact your MANITOU dealer. Non-contractual document. Product descriptions may differ from actual products. List of specifications is not comprehensive. The logos and visual identity of the company are the property of MANITOU and may not be used without authorisation. All rights reserved. The photos and diagrams contained in this brochure are provided for information only.

MANITOU BF SA - Limited company with board of directors - Share capital: 39,547,824 euros - 857 802 508 RCS Nantes

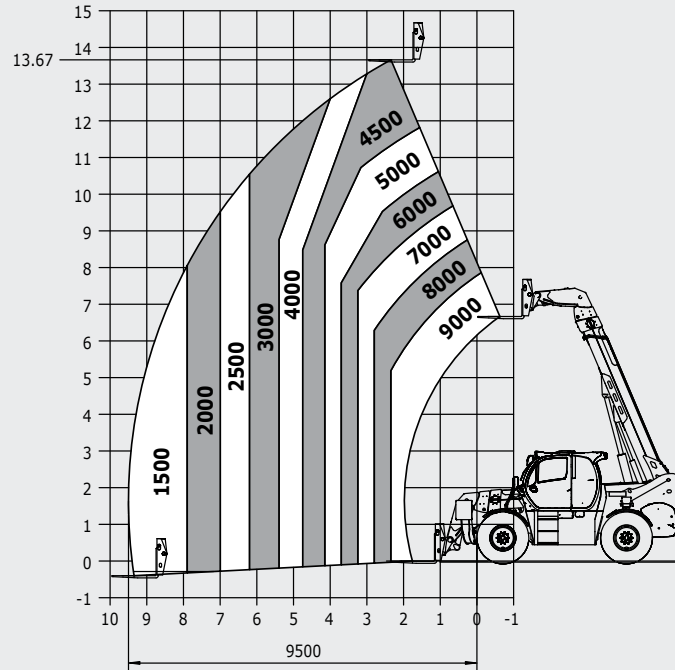


# MHT-X 1490

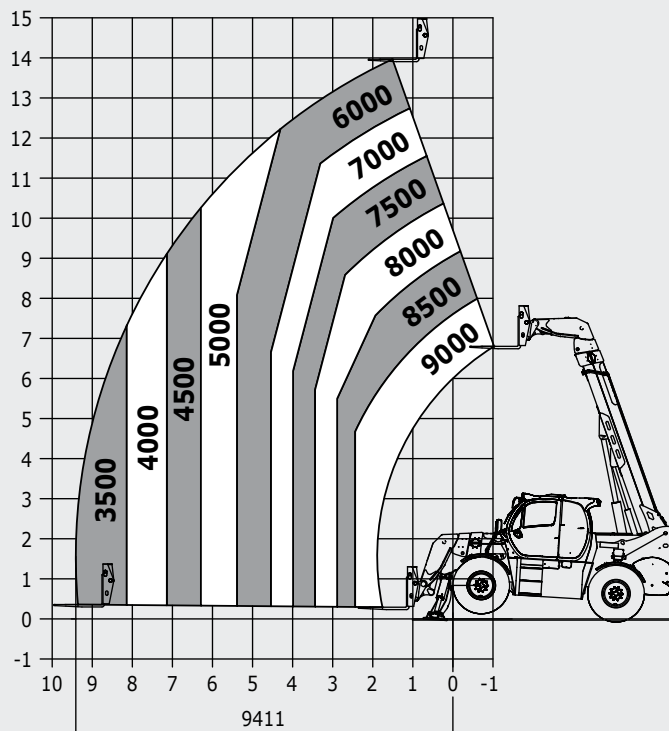
## Rough terrain load chart

Standard EN1459 B

### Machine on tyres with forks CDG 600 mm



### Machine on stabilizers with forks CDG 600 mm



This brochure describes versions and configuration options for MANITOU products which may be fitted with different equipment. The equipment described in this brochure may be standard, optional or not available depending on version. MANITOU reserves the right to change the specifications shown and described at any time and without prior warning. The manufacturer is not liable for the specifications given. For more information, contact your MANITOU dealer. Non-contractual document. Product descriptions may differ from actual products. List of specifications is not comprehensive. The logos and visual identity of the company are the property of MANITOU and may not be used without authorisation. All rights reserved. The photos and diagrams contained in this brochure are provided for information only.



MANITOU BF SA - Limited company with board of directors - Share capital: 39,547,824 euros - 857 802 508 RCS Nantes

Your nearest **MANITOU** dealer:



Head office:

B.P. 249 - 430 rue de l'Aubinière - 44158 Ancenis Cedex - France

Tel: 00 33 (0)2 40 09 10 11 - Fax: 00 33 (0)2 40 09 10 97

[www.manitou.com](http://www.manitou.com)



[facebook.com/manitou.official](https://facebook.com/manitou.official)